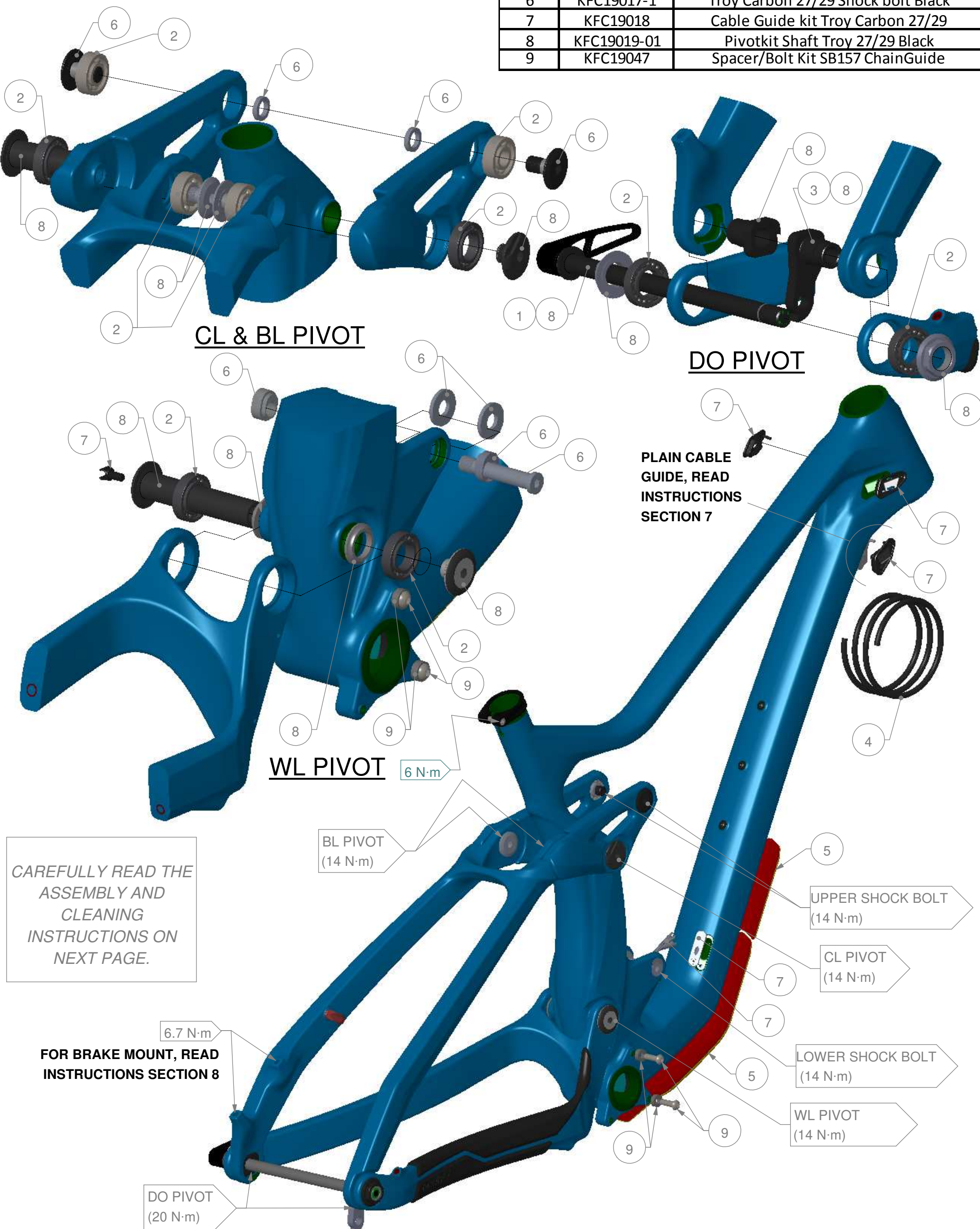


TROY CARBON 27/29		
ITEMS	#SERVICE KIT	DESCRIPTION
1	KFC19010	Rear Axle SuperBoost157*12mm/209.5mm
2	KFC19015	Bearing kit Troy 27/29
3	KFC11051	Derailleur Hanger SplitPivot
4	KFC16053	Foam Kit for Internal Routing
5	KFC19016	Protector kit Troy Carbon 27/29
6	KFC19017-1	Troy Carbon 27/29 Shock bolt Black
7	KFC19018	Cable Guide kit Troy Carbon 27/29
8	KFC19019-01	Pivotkit Shaft Troy 27/29 Black
9	KFC19047	Spacer/Bolt Kit SB157 ChainGuide



ASSEMBLY INSTRUCTIONS:

- 1- THOROUGHLY CLEAN THE INTERIOR OF EACH BEARING HOUSING TO REMOVE ANY DIRT OR OLD GREASE;
- 2- APPLY HIGH QUALITY WATERPROOF GREASE ON THE INSIDE FACE AND OUTSIDE DIAMETER OF ALL BEARING HOUSINGS BEFORE PRESS-FIT;
- 3- APPLY HIGH QUALITY WATERPROOF GREASE TO ALL PIVOT PARTS THAT CONTACT WITH THE INNER DIAMETER OF THE BEARINGS.
- 4- APPLY HIGH QUALITY WATERPROOF GREASE TO ALL NON-THREADED METAL-TO-METAL INTERFACES (EX.: PLANAR FACE OF THE PIVOT SPACER THAT CONTACTS THE LATERAL FACES OF THE FRONT TRIANGLE WL PIVOT). THESE INSTRUCTIONS ALSO APPLY TO THE SHOCK ASSEMBLY;
- 5- UNLESS OTHERWISE SPECIFIED, APPLY BLUE LOCTITE 242 ON ALL THREADS BEFORE ASSEMBLY TO THE SPECIFIED TORQUE VALUE;
- 6- TO PREVENT DAMAGE TO THE FRAME, THE SEATPOST MUST HAVE A MINIMUM INSERTION IN THE SEAT TUBE.

CARBON FRAME:

SMALL / MEDIUM - 70mm INSERTION
LARGE / X-LARGE - 100mm INSERTION

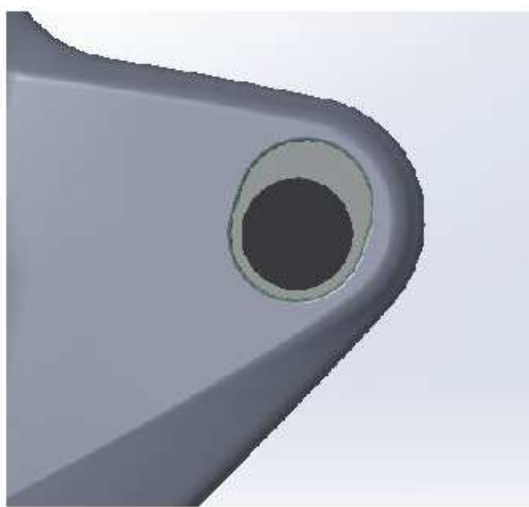
*ALWAYS VERIFY CONNECTOR CLEARANCE BEFORE FULLY INSERTING A DROPPER POST.

7- **FRONT CABLE ENTRIES:** IN ORDER TO BE COMPATIBLE WITH ALL CONFIGURATIONS, WE ADDED 2 PLAIN CABLE GUIDES (LEFT AND RIGHT) FOR THE FRONT ENTRY. THOSE CABLE GUIDE CAN BE DRILLED MANUALLY USING THE POSITION MARKS ON THE BACK.

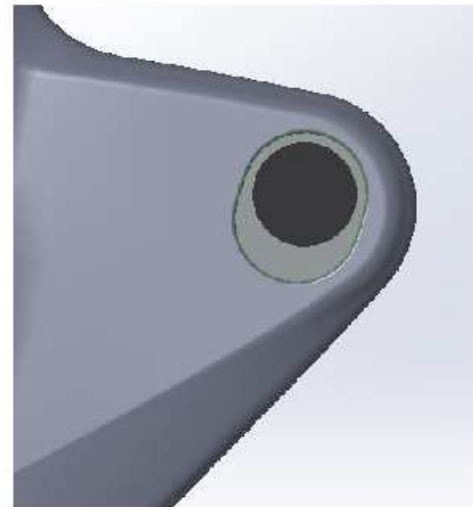
8- **REAR BREAK MOUNT:** DURING THE ASSEMBLY, YOU WILL NOTICE THAT THE NATURAL BEND OF THE BRAKE CABLE MAY COME IN CONTACT WITH THE WHEEL'S SPOKES OR THE FRAME. SO WE HIGHLY SUGGEST TO GIVE A FULL ROTATION OF THE BRAKE BEFORE MOUNTING IT. IT WILL GIVE A TWIST TO THE CABLE AND PREVENT POTENTIAL CONTACTS.

9- **FRG ADJUSTABLE:** THIS DESIGN ALLOWS RIDERS TO CHOOSE BETWEEN A LOW OR HIGH POSITION. WITH FRG ADJUSTABLE TECHNOLOGY, YOU CAN FINE-TUNE YOUR RIDE TO PERSONAL TASTES OR SPECIFIC TRAIL TYPES USING A FLIP-FLOP PIVOT MECHANISM THAT SLIGHTLY CHANGES THE BIKE'S GEOMETRY AS SHOWN BELOW.

LOW POSITION



HIGH POSITION



CLEANING INSTRUCTIONS:

IT IS A WELL KNOWN FACT THAT A CLEAN BIKE PERFORMS BETTER. DEVINCI RECOMMENDS WASHING YOUR BIKE REGULARLY USING A BRUSH AND SOAPY WATER. HOWEVER, DEVINCI DO NOT RECOMMEND THE USE OF A PRESSURE WASHER, SINCE THIS MAY SIGNIFICANTLY REDUCE THE SERVICE LIFE OF BALL BEARINGS. EVEN THOUGH OUR BALL BEARINGS ARE EQUIPPED WITH HIGH QUALITY DOUBLE-LIP SEALS, HIGH PRESSURE WATER CAN STILL PASS THESE SEALS AND REMOVE THE GREASE INSIDE THE BEARING. THIS MAY CAUSE PREMATURE CORROSION AND WEAR OF THE BALL BEARINGS.

DEVINCI

CABLE HOUSING AND SEATPOST

- Seatpost cable
- Rear derailleur cable
- Rear brake hose
- Cable outside the frame
- Cable inside the frame

Step 5

Pull out the rear brake hose through the upper left guide. *If plain, drill your own hole.*

Step 1

Thread the dropper post cable into the right guide. *If plain, drill your own hole.*

Step 6

Pull the rear derailleur cable through the lower left guide. *If plain, drill your own hole.*

Step 4

Enter the rear brake cable through the left guide.

Step 2

Pull out the rear brake hose from sheathing under the chainstay. *Attach the cable on the clip provided for this purpose.*

Step 1

Clip the hose on the seatstay. Enter the rear brake hose into the tube above the chainstay.

Step 3 | Step 4 | Step 2

Protect the cables by wrapping them individually in the foam tubes before passing them in the down tube to prevent them from snapping.

Step 3

Pull the dropper post cable out of the hole in the bottom bracket to slide the cable more easily into the seat tube. *Pull out enough length to prevent pinching.*

Step 1

Enter the rear derailleur cable into the tube above the chainstay.

Step 5

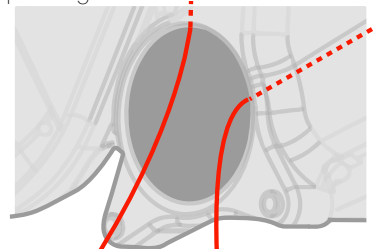
Pass the rear derailleur cable into the right guide.

Step 3

Attach the rear derailleur cable with zip tie in the holes provided for this purpose.





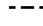
Step 2

Remove the cable from the rear derailleur of the tube under the chainstay.



DEVINCI

TRANSMISSION ET TIGE DE SELLE

-  Gaine de tige de selle
-  Gaine du dérailleur arrière
-  Gaine du frein arrière
-  Gaine à l'extérieur du cadre
-  Gaine à l'intérieur du cadre

Étape 5

Sortez la gaine du frein arrière par la butée supérieure gauche. *Si pleine, percez le trou.*

Étape 1

Passer la gaine de tige de selle dans la butée de droite. *Si pleine, percez le trou.*

Étape 6

Sortez la gaine du dérailleur arrière par la butée inférieure gauche. *Si pleine, percez le trou.*

Étape 4

Rentrez la gaine du frein arrière par la butée de gauche.

Étape 2

Sortez la gaine du frein arrière de la paille sous la base. *Accrochez la gaine sur le support prévu à cet effet.*

Étape 1

Fixez la gaine sur la butée du hauban. Rentrez la gaine du frein arrière dans la paille au dessus de la base.

Étape 3 | Étape 4 | Étape 2

Protéger les gaines en les enveloppant individuellement dans les tubes de mousse avant de les passer dans le tube du bas afin d'éviter qu'elles ne claquent.

Étape 3

Sortez la gaine de tige de selle du trou de l'axe du pédalier afin de glisser la gaine plus facilement jusqu'au poteau de selle. *Sortir assez de longueur pour éviter le coincement.*

Étape 1

Rentrez la gaine du dérailleur arrière dans la paille au-dessus de la base.

Étape 5

Passer la gaine du dérailleur arrière dans la butée de droite.

Étape 3

Attachez la gaine du dérailleur arrière avec des colliers de serrage en plastique dans les trous prévus à cet effet.

Étape 2

Sortez la gaine du dérailleur arrière de la paille sous la base.

*Les gaines sont tenues en place dans les butées par des attaches-rapides.



TROY 29

Carbon / Aluminum

2019 - Current

Frame

<i>Axle Length:</i>	209mm
<i>Rear Hub Spacing:</i>	12 x 157 mm
<i>Chain Guide:</i>	ISCG 05
<i>Recommended Fork Offset:</i>	44 mm, 42mm
<i>Seat Post Diameter:</i>	31.6 mm
<i>Seat Collar Diameter:</i>	37 mm / 35 mm
<i>Upper Headset:</i>	ZS 44/28
<i>Lower Headset:</i>	ZS 56/40
<i>Rear Brake:</i>	Post Mount 180 mm / MAX 200mm

Drivetrain

<i>Crankset type:</i>	SuperBoost 1X
<i>Minimum Q-Factor:</i>	173 mm
<i>Chain Line:</i>	56.5 mm
<i>Minimum Chain Ring:</i>	30T
<i>Maximum Chain Ring:</i>	38T
<i>Bottom Bracket:</i>	BSA 73 mm

Rear Shock

<i>Dimension:</i>	185 mm x 52.5 mm
<i>Piggy Back Compatibility:</i>	YES
<i>Coil Shock Compatibility:</i>	YES
<i>Upper Hardware:</i>	Trunnion
<i>Lower Hardware:</i>	10 mm x 35 mm

For more information contact service@devinci.com